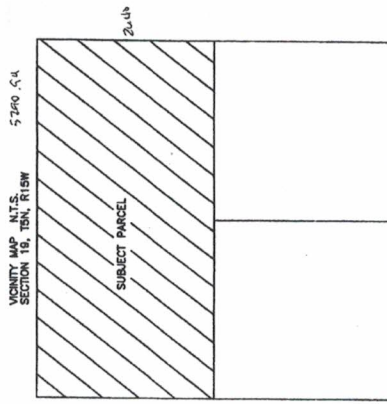
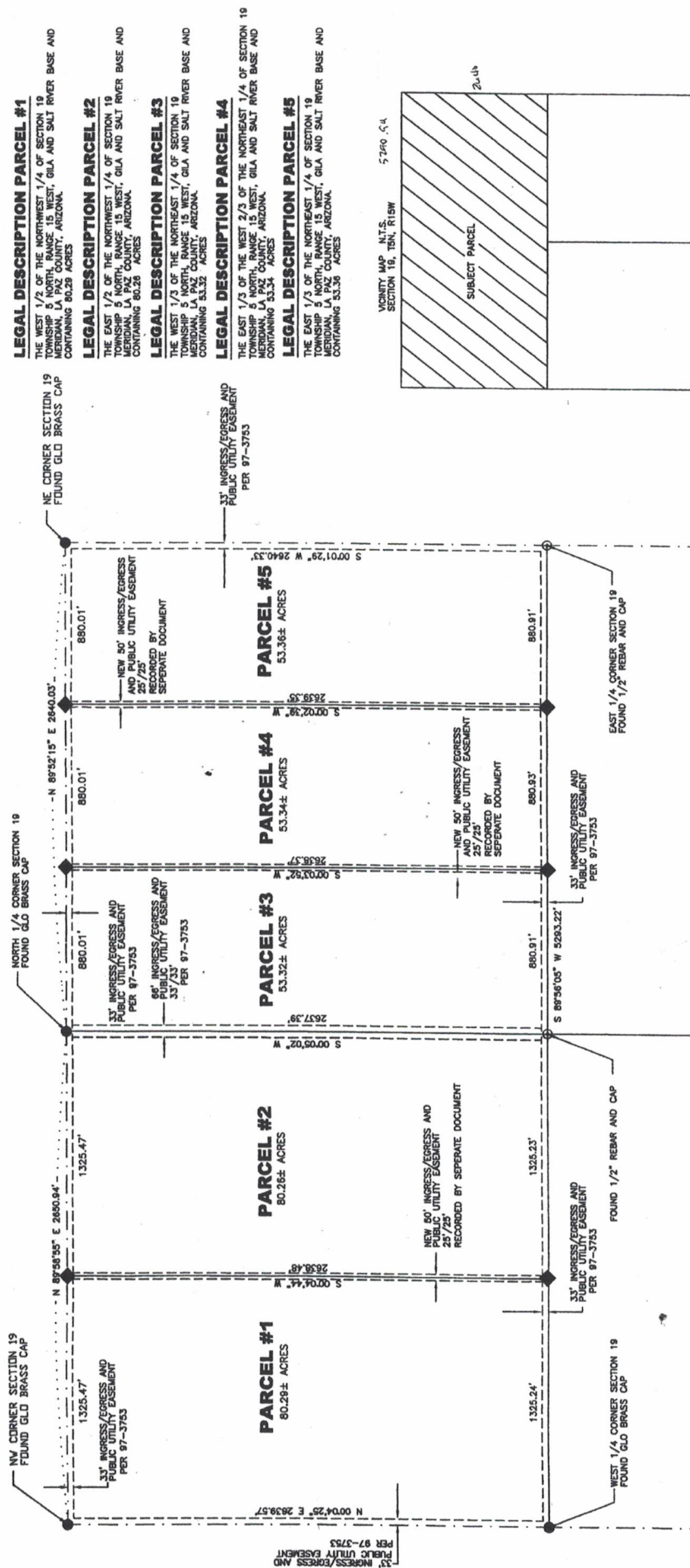


RECORD OF SURVEY
 THE NORTH HALF OF SECTION 19,
 TOWNSHIP 5 N, RANGE 15 W,
 GILA & SALT RIVER BASE AND MERIDIAN
 LA PAZ COUNTY, ARIZONA
 APN 308-32-006
 MINOR LAND DIVISION OF PLOMOSA TRAILS
 DOCUMENT # 97-3753 LPCR
 OWNER - HIGH MOUNTAIN PARTNERS LLC

LEGEND
 THESE STANDARD SYMBOLS WILL
 BE FOUND IN THE DRAWING.

- FOUND G.L.D. BRASS CAP
- ◆ SET 1/2" REBAR W/CAP 31595
- ⊙ FOUND 1/2" REBAR WITH CAP // 26401



SURVEYOR'S CERTIFICATE

THIS IS TO CERTIFY THAT THE SURVEY OF THIS PLAT
 WAS MADE UNDER MY DIRECTION AND SUPERVISION
 AND IS CORRECTLY REPRESENTED ON THIS PLAT.



APN 308-32-07A
 NOT A PART

APN 308-32-07B
 NOT A PART

MINOR LAND DIVISION

DRAWN	DATE	SUMMIT SURVEYS
LC	11/06/06	LEE GRAY 928-380-8136
APPROVED	DATE	
		1003 W. PERALTA MESA, AZ. 85210
SCALE	SHEET	PROJECT NO.
1" = 400'	1 OF 1	HIGH MOUNTAIN PARTNERS