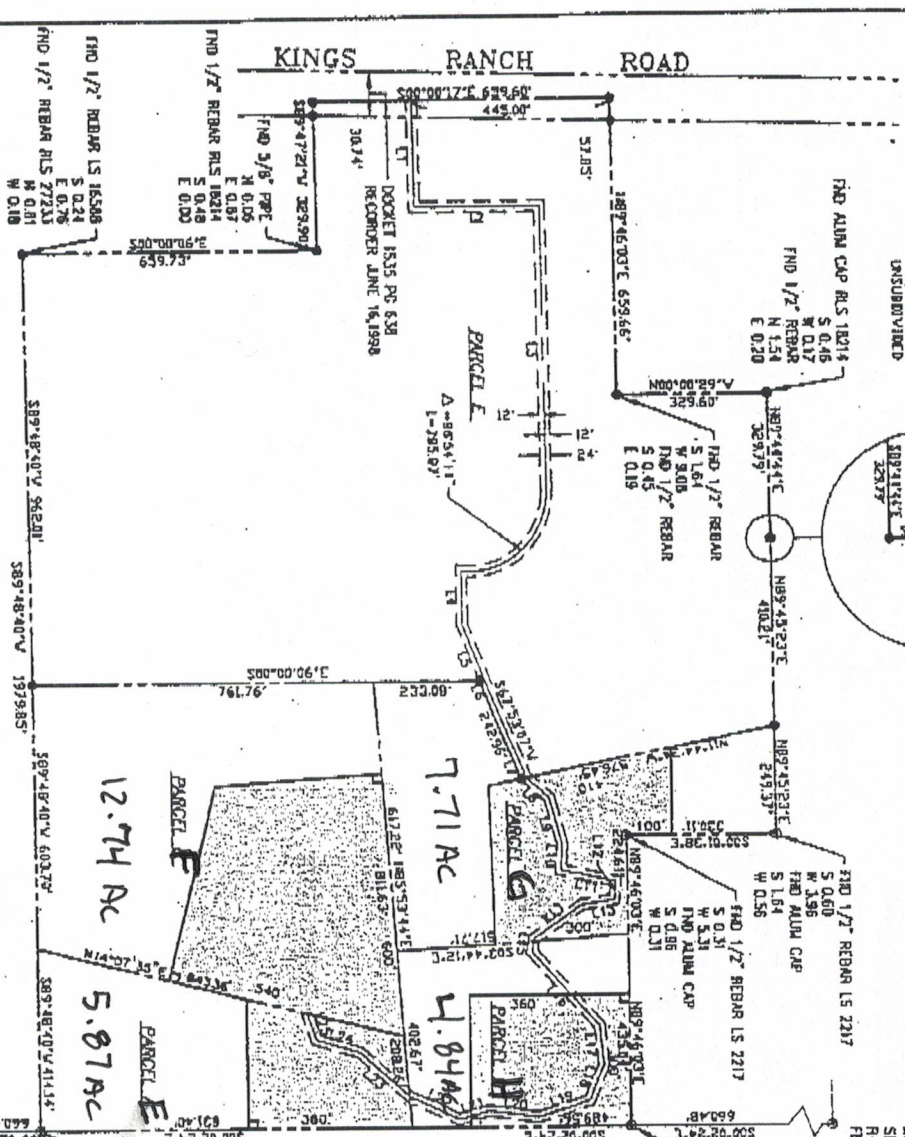


HOMESITE BOUNDARIES

A PORTION OF SECTION 4, T15, R9E,
GASPARA N. PINAL COUNTY, ARIZONA

EAST QUARTER CORNER
SECTION 3, T1-S,
R9-E, G&A S.R.B. & M.
FIND Q10 BC



AREA
TOTAL PARCELS A, B, C, D & E
3,157,241 sq. ft.
72,400 acres

SYMBOL LEGEND

- FOUND BRASS CAP FLUSHA
- FOUND 1/2" REBAR (17P)
- UNLESS OTHERWISE NOTED
- SET 1/2" BAR WITH CAP R/S 17359
- TYP UNLESS OTHERWISE NOTED

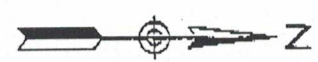
BASIS OF BEARING

EAST SECTION LINE OF THE SOUTHEAST
QUARTER OF SECTION 4, T15, R9-E,
G & A S.R.B. & M. (ADJ. 82-24-40)

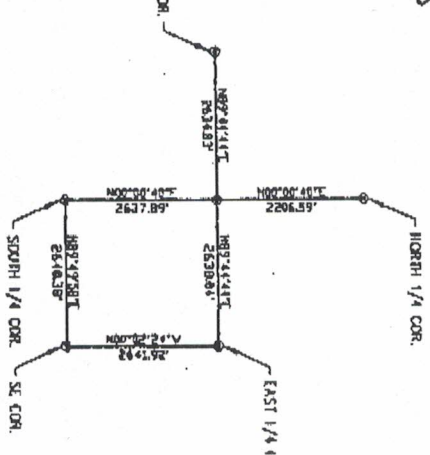
LINE	BEARING	DISTANCE
L1	S89°16'03"W	236.30
L2	S00°13'57"E	290.00
L3	S89°16'03"W	641.19
L4	N89°50'24"W	123.07
L5	S87°53'07"W	122.80
L6	N22°08'53"W	21.50
L7	S67°53'07"W	21.50
L8	S12°31'15"W	48.85
L9	N82°46'45"W	109.40
L10	S82°46'45"W	28.45
L11	S87°13'38"W	126.83
L12	N87°10'05"W	41.20
L13	N87°10'05"W	75.61
L14	N35°03'17"W	131.55
L15	N87°05'58"W	30.88
L16	S48°43'06"W	274.79
L17	S87°59'55"W	88.55
L18	N87°37'22"W	89.04
L19	N17°21'27"W	11.50
L20	N07°42'48"W	88.87
L21	N25°33'53"E	117.87
L22	N15°07'24"E	151.63
L23	N17°19'20"E	96.59
L24	N17°19'20"E	63.11
L25	N17°41'42"E	63.11

SOUTHEAST SECTION CORNER
SECTION 3, T1-S,
R9-E, G&A S.R.B. & M.
FIND Q10 BC

← BUILDING
PADS



DETAIL OF SE 1/4 OF SEC. 4, T15, R9E



PROJECT: HOMESITE AND ADJACENT B.C.
DRAWN BY: JAMES A. ADAMS
CHECKED BY: JAMES A. ADAMS
DATE: 4/14/00

HOMESITE BOUNDARIES

DESIGN: 1
DRAWN: 2
SCALE: AS SHOWN
CHECK: 2
DATE: 2
VERT: 7